

Casters for all applications



No matter your caster requirement, your Source Casters dealer has access to the largest selection of casters, wheels, and caster accessories through our vast network of manufacturing partners. Contact us to discuss your requirements.

20/21 Series Institutional Stem Casters

Our 20 and 21 series institutional stem casters are perfect for light and medium duty institutional workloads. All wheels are floor protective.

Specifications

Capacity	75 - 300 lbs
Wheel Diameter	2" - 5"
Tread Width	7/8" - 1-3/8"
Available Bearings	Plain, Delrin, Precision Ball
Available Stems	Grip Ring, Threaded, Grip Neck



Polyurethane on Plastic

Capacity to 300 lbs
Impact resistant, quiet



TPR on Plastic

Capacity to 300 lbs
Super smooth and quiet



Solid Polypropylene

Capacity to 300 lbs
Economical, chemical resistant

32 Series Institutional Plate Casters

Our 32 series is found all over hospitals, food service, retail, and industrial facilities. With its quiet rolling wheels, high quality brakes, and smooth swivel sections, it's a favorite for all sorts of applications.

Specifications

Capacity	75 - 300 lbs
Wheel Diameter	3" - 5"
Tread Width	1-3/8"
Available Bearings	Plain, Delrin, Precision Ball
Plate Size	2-5/8" x 3-7/8"
Bolt Hole Spacing	1-3/4" x 3"



Polyurethane on Plastic

Capacity to 300 lbs
Impact resistant, quiet



TPR on Plastic

Capacity to 300 lbs
Super smooth and quiet



Solid Polypropylene

Capacity to 300 lbs
Economical, chemical resistant

Everyday Industrial Uses

45 Series Medium Duty Industrial Casters

Built to handle the abuse that comes with general industrial use. Perfect for manual push operations like warehouse carts, tool trucks, and much more.

Specifications

Capacity	350 - 1,250 lbs
Wheel Diameter	4" to 8"
Tread Width	2"
Available Bearings	Roller, Precision Ball, Delrin
Top Plate Size	4" x 4-1/2"
Bolt Hole Spacing	2-5/8" x 3-3/8" to 3" x 3"



Polyurethane on Plastic

Capacity to 1,000 lbs
Durable, floor protective



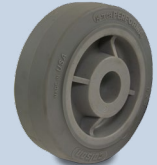
Polyurethane on Iron

Capacity to 1,250 lbs
High capacity, floor protective



Poly on Aluminum

Capacity to 1,250 lbs
Rust free, floor protective



TPR on Plastic

Capacity to 600 lbs
Cushioned, quiet rolling



Cast Iron

Capacity to 1,250 lbs
High capacity, low price



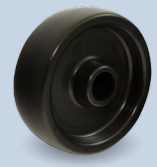
V-Groove Cast Iron

Capacity to 1,000 lbs
Track guided precision



Phenolic

Capacity to 1,250 lbs
Non-metallic, high capacity



Polypropylene

Capacity to 800 lbs
Chemical friendly



Solid Polyurethane

Capacity to 1,250 lbs
One piece, durable wheel



Glass Reinforced Nylon

Capacity to 1,250 lbs
High capacity impact resistant



Rubber on Iron

Capacity to 500 lbs
Economical soft wheel



Advanced Ergonomic

Capacity to 1,250 lbs
Smooth rolling, easy starts

Available Options

Optional Finishes	Stainless Steel
Brakes	Cam, Tread, Total Lock
Swivel Lock	Field Installable
Thread Guards	Available on all wheel sizes

Heavier Duty Applications

71 Series Medium Duty Kingpinless Casters

Kingpins are the single greatest point of failure on industrial casters. By forming the race into the top plate, our kingpinless casters can withstand greater impact, load, and shock than traditional casters.

Specifications

Capacity	350 - 1,500 lbs
Wheel Diameter	4" to 8"
Tread Width	2"
Available Bearings	Roller, Precision Ball, Delrin
Top Plate Size	4" x 4-1/2"
Bolt Hole Spacing	2-5/8" x 3-3/8" to 3" x 3"



Polyurethane on Plastic

Capacity to 1,000 lbs
Durable, floor protective



Polyurethane on Iron

Capacity to 1,500 lbs
High capacity, floor protective



Poly on Aluminum

Capacity to 1,500 lbs
Rust free, floor protective



TPR on Plastic

Capacity to 600 lbs
Cushioned, quiet rolling



Cast Iron

Capacity to 1,500 lbs
High capacity, low price



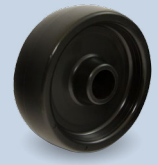
V-Groove Cast Iron

Capacity to 1,000 lbs
Track guided precision



Phenolic

Capacity to 1,400 lbs
Non-metallic, high capacity



Polypropylene

Capacity to 800 lbs
Chemical friendly



Solid Polyurethane

Capacity to 1,250 lbs
One piece, durable wheel



Glass Reinforced Nylon

Capacity to 1,400 lbs
High capacity impact resistant



Rubber on Iron

Capacity to 500 lbs
Economical soft wheel



Advanced Ergonomic

Capacity to 1,500 lbs
Smooth rolling, easy starts

Available Options

Optional Finishes	Stainless Steel
Brakes	Cam, Tread, Total Lock
Swivel Lock	Field Installable
Thread Guards	Available on all wheel sizes
Optional Top Plate	4-1/2" x 6-1/2"

For Your Most Abusive Applications

75 Series Heavy Duty Kingpinless Casters

The 75 Series is perfect for heavy duty or towed applications. The kingpinless swivel section and available precision tapered wheel bearings make this series one of the toughest on the market.

Specifications

Capacity	700 - 4,100 lbs
Wheel Diameter	6" - 10"
Tread Width	2-1/2" - 3"
Available Bearings	Roller, Precision Ball, Tapered
Plate Size	4-1/2" x 6-1/4"
Bolt Hole Spacing	2-7/16" x 4-15/16" to 3-3/8" x 5-1/4"



Phenolic

Capacity to 2,900 lbs
Non-metallic, high capacity



Polyurethane on Iron

Capacity to 3,000 lbs
Impact resistance, quiet



Cast Iron

Capacity to 2,800 lbs
High capacity, low price

Available Options

Optional Finishes	Powder Coating, Stainless Steel
Brakes	Face Contact Brake
Swivel Lock	Field Installable
Optional Top Plate	5-1/4" x 7-1/4"

Your Authorized Source Casters Dealer: