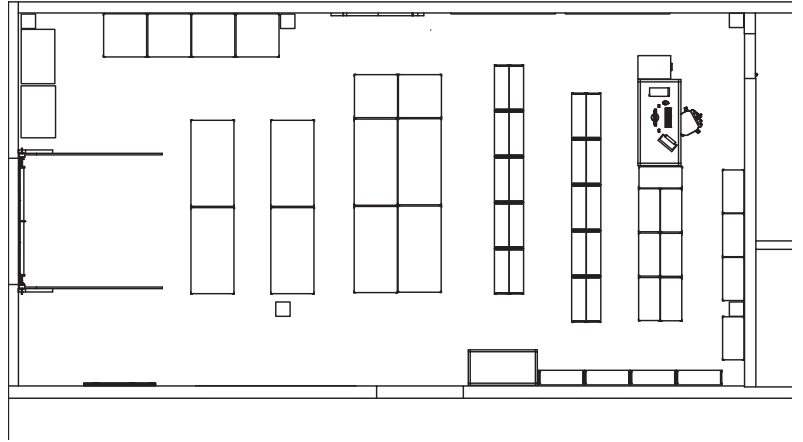




**Automotive Dealership Parts  
and Service Solutions**

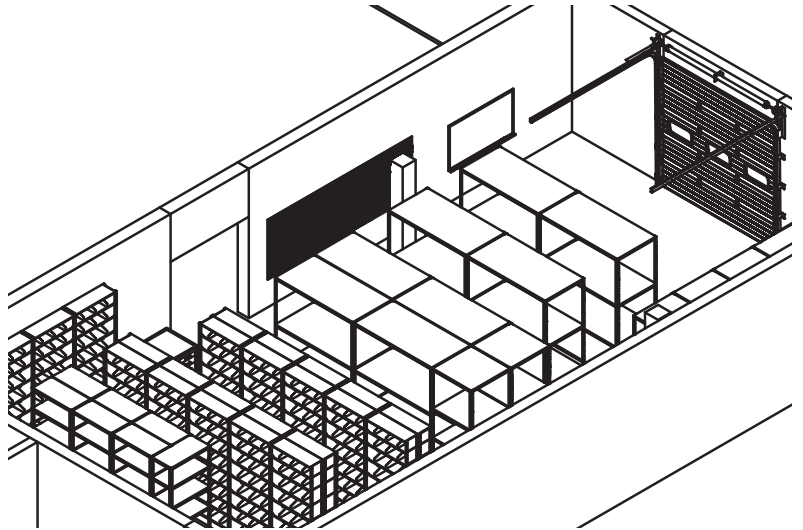
## Professional design from concept to reality

We believe that at the core of every successful project is a clearly defined plan. Conveyor & Caster - Equipment for Industry helps you develop and define your plan, from the ground up. Our design team will work with you to create a clear layout and plan for your project.



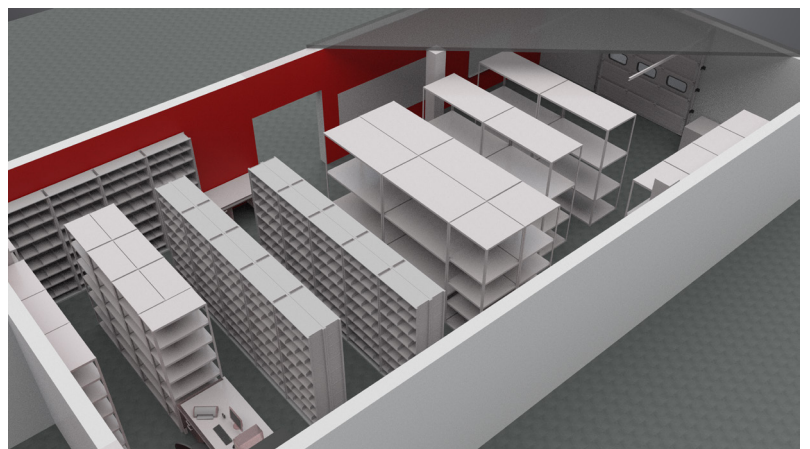
## Solid design for solid solutions

We know how frustrating it is to have equipment not fit the way it is supposed to. Our team of engineers will construct a three dimensional model of your space and the proposed equipment. This helps us ensure a perfect fit, the first time.



## Rendered to near reality

Layout and profile drawings can give you a sense of what a solution will look like. But our solid modeling allows us to provide you a virtual walk-through of your new parts room or service bays. You will be able to test drive your project and see how everything fits together and fills the space.



## Parts room solutions

A well-designed parts room makes for an efficient, effective, and adaptable parts department. Successfully growing your dealership requires a parts department that can grow with you while adapting to changing market demands. Having the right parts, in the right place, at the right time, is a simple formula for a highly profitable parts department. A well-organized parts room is the only way to get there. No matter your need, whether designing a new parts room for a brand new building, retrofitting an existing space, or expanding your operation, we can help with a layout, custom-designed to help you meet your business goals.



## Improve service bay performance

The service departments of old, with a variety of technician-owned toolboxes and carts in clashing colors and styles, were an eyesore. A clean, well-organized service department is a hallmark of a successful dealership today. Efficient and organized service departments improve the experience for both customers and technicians. Customers will see their vehicle maintained in a clean, tidy service bay, keeping them coming back, visit after visit. Technicians will enjoy an efficient, well organized, and more pleasant working environment, making it easier to keep the best techs on staff. More dealerships are turning to Conveyor & Caster - Equipment for Industry to design customized, uniform workstations for their service departments.



## Add capacity with steel mezzanines and vertical conveyors

Running out of room? Feeling cramped? Freestanding steel mezzanines allow you to add additional square footage without the hassle or expense of construction. Steel mezzanines are available to fit almost any size room.

Worried about carrying all that material up and down stairs? Additional floors can be serviced by a Vertical Reciprocating Conveyor (VRC). VRCs allow for goods to be transported between floors, much like an elevator, without the need to install a pit or shaft way.



## Woven wire partitions improve security

Losing a high value item eats away at your hard-earned profits. Woven wire partitions improve security in your parts room by creating key controlled access for high-risk or high-value items. Our woven wire partitions are available in a variety of height and finishes with a wide assortment of doors and accessories.



We keep your business rolling!

Ohio • New York • Pennsylvania • Michigan  
29570 Clemens Road • Westlake, Ohio 44145  
216.631.0202 • 800.777.0600  
[www.cc-efi.com](http://www.cc-efi.com)